

Pipe coupling

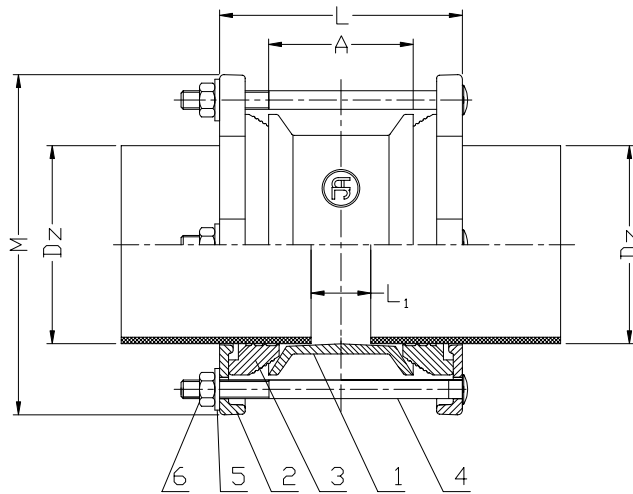
PN10
PN16

WATER



No.	Part	Standard execution
1	Body	Ductile cast iron EN-GJS 500-7 EN 1560
2	Flange	Ductile cast iron EN-GJS 500-7 EN 1560
3	Gasket	Rubber EPDM EN-ISO 1629
4	Screw	Steel Fe/Zn5; Stainless steel A2(*) EN ISO 4017
5	Washer	Steel Fe/Zn5; Stainless steel A2(*) EN ISO 7091
6	Nut	Steel Fe/Zn5; Stainless steel A4(*) EN ISO 4032

(*) - other material variants on special request



DN	D _z	L	L ₁		A	M	Weight
			min	max			
							[mm]
							[kg]
40	47-60	190	25	50	100	149,5	3,1
50	57-74	190	25	50	95	154,5	3,0
65	63-85	190	25	50	95	173,5	3,6
80	84-107	190	25	50	95	195,5	4,1
100	106-132	190	25	50	95	224,5	4,8
125	132-158	190	25	50	95	254,5	6,0
150	157-185	190	25	50	95	280,5	6,9
200	189-212	230	40	80	130	306,5	9,4
200	218-244	230	40	80	130	342,5	10,9
250	264-295	230	40	80	130	399,5	14,6
300	315-349	230	40	80	130	462,5	19,4

* DN350 from DN2000 on request

Product description (standard execution):

- Acceptable axial deviation at each end up to $\pm 6^\circ$
- EPDM Rubber sealing approved for potable water
- Stainless steel or galvanized nuts and screws
- Plastic protection caps at screw ends
- Installation in any position allowed
- Body and flange made of ductile cast iron EN-GJS 500-7
- Grooved gasket absorbs minor imperfections of the pipe surface
- Epoxy coating minimum 250 microns according to EN 14901, GSK RAL certificate
- Face to face according to the Jafar documentation
- Product according to EN 14525
- Product marking according to EN 19; EN 1074

Application:

Water line networks: potable water and other chemically inert fluids. Connection of straight naked-end pipes made of cast iron, asbestos-cement or PVC. Working pressure up to 1.6 MPa, temperature up to +70°C

Test control:

Water pressure test according to EN 1074-1; EN 12266-1
Seat: 1,1 x PN
Body: 1,5 x PN